



# Judgement Under Pressure<sup>TM</sup>

When pressure rises, judgement shifts.

Sunil Kumar | The Holding Discipline

# The Myth of Sudden Collapse



Judgement rarely collapses suddenly.



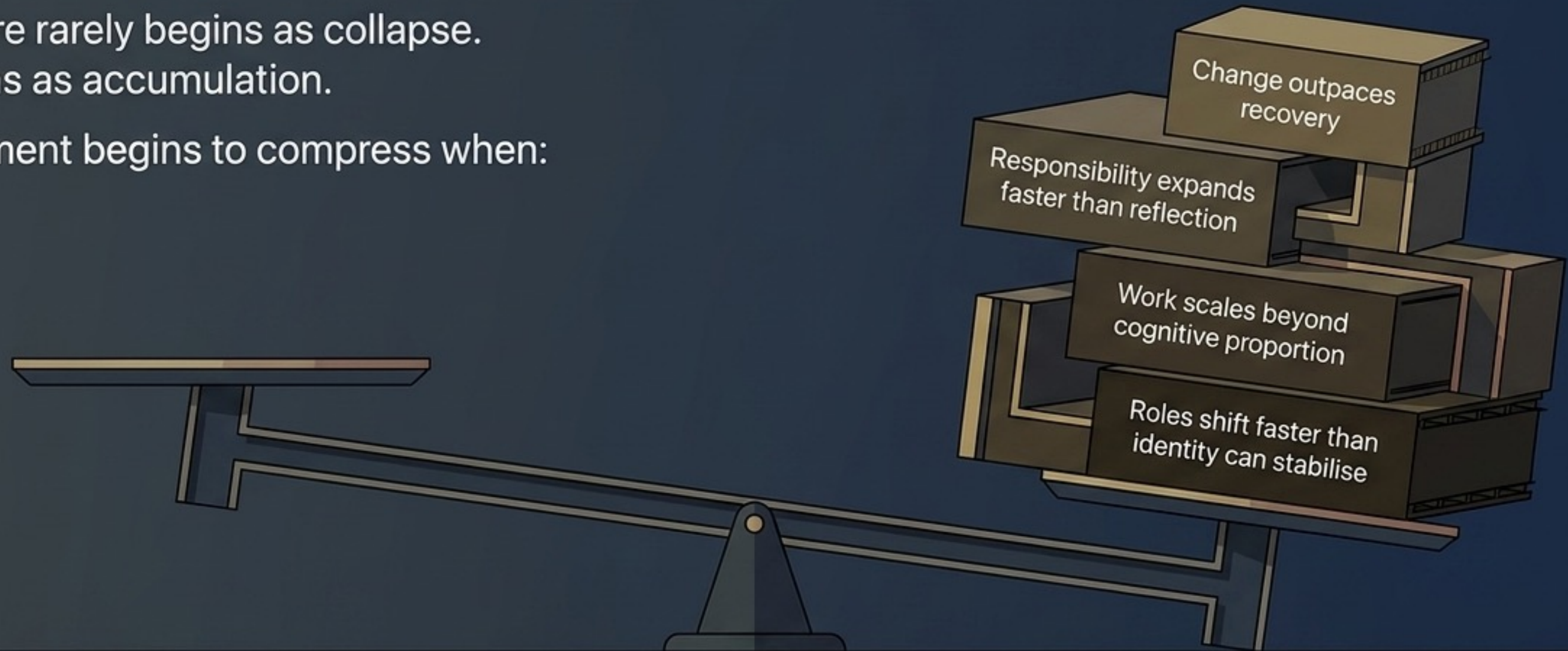
It shifts gradually under pressure.

Most people do not lose capability under pressure. They lose proportion.

# The Mechanics of Accumulation

Pressure rarely begins as collapse.  
It begins as accumulation.

Judgement begins to compress when:



Compression rarely feels dramatic while it is happening. It feels necessary.

# THE COMPRESSION CURVE



## PRESSURE INCREASES

Demands rise. Capacity stretches.



## REFLECTION DECREASES

Less pause. Less perspective.



## URGENCY INCREASES

Speed feels essential. Reactivity rises.



## CLARITY WEAKENS

Signal gets lost. Focus narrows.



## JUDGEMENT COMPRESSES

Proportion shrinks. Decisions distort.



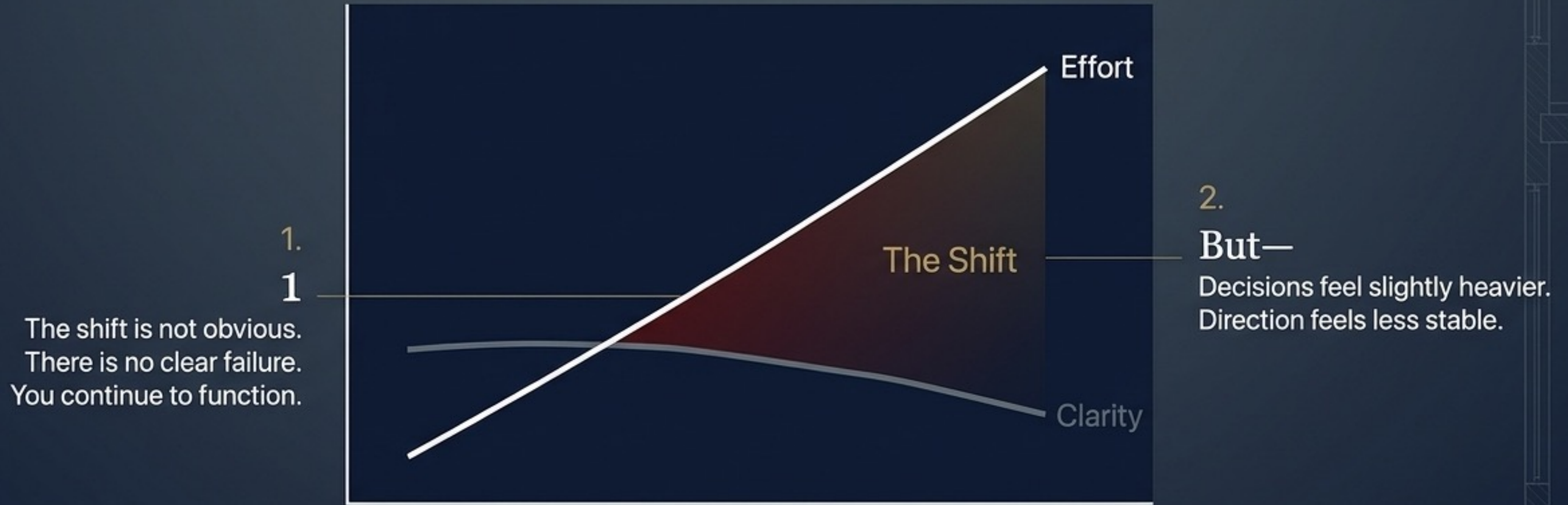
**THE RESULT:** More effort.  
Less alignment. Poorer judgement.

# Recognizing the Shift

Judgement does not disappear. It compresses.



# The Quiet Erosion



This is rarely a capability problem. When pressure rises, judgement shifts.

# Why This is Often Misunderstood

<b>The Trap</b>	<b>The Reality</b>
<p><b>We assume it is:</b> A discipline, capability, or strategy problem.</p>	<p><b>The Short-term:</b> It works temporarily.</p>
<p><b>So we respond with:</b> More effort, more thinking, more pushing, more control.</p>	<p><b>The Long-term:</b> The underlying compression remains.</p>

Because effort cannot correct compressed judgement.

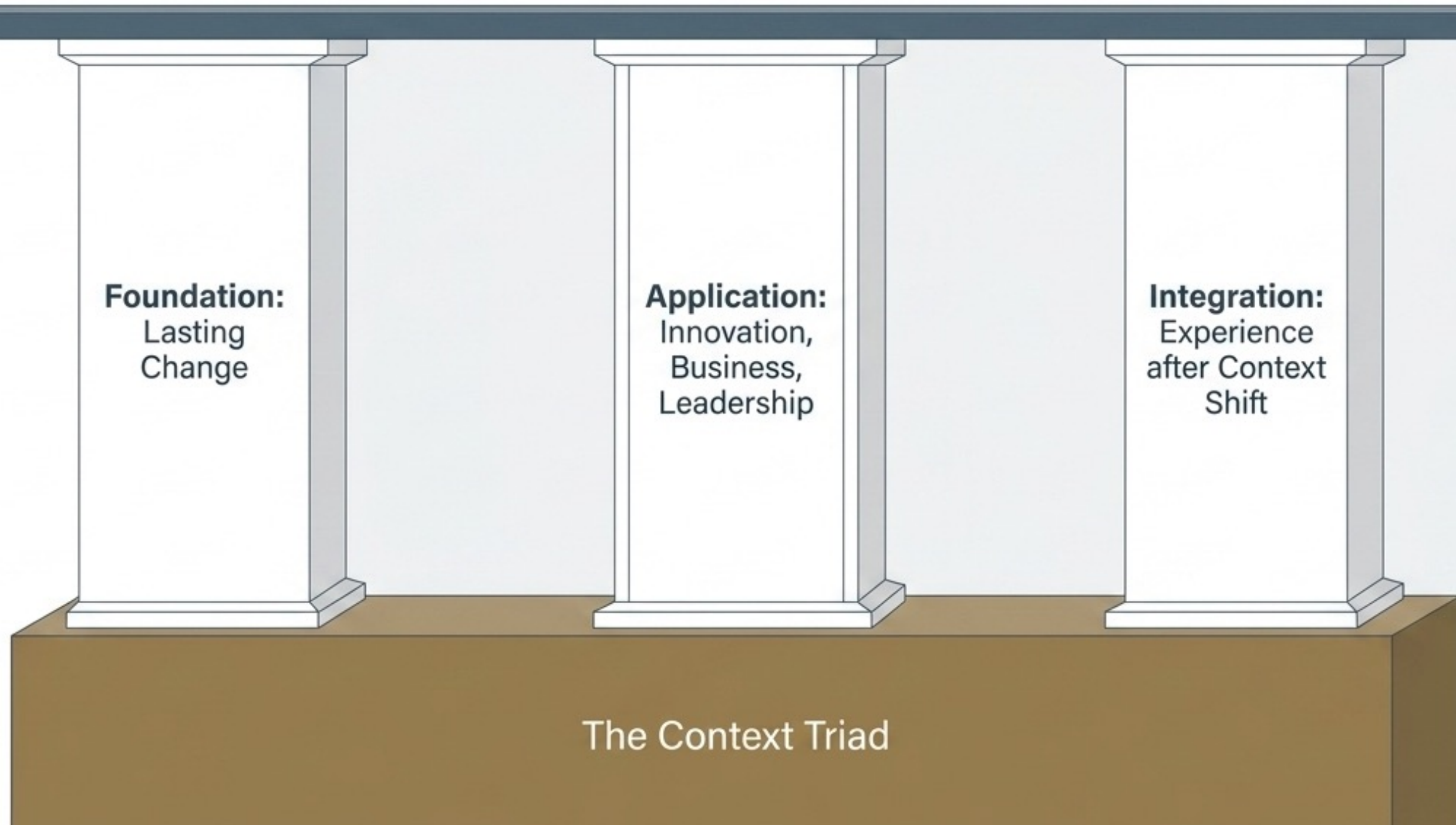
Force cannot  
restore proportion.

---

Restored proportion  
restores judgement.

# Where Compression Appears

The shift appears differently across environments, but follows recognisable patterns.



# Foundation: Lasting Change

You know what matters.  
But consistency does  
not hold.

This is rarely a discipline problem.  
Pressure is already shaping judgement.



Starting  
requires  
more effort  
than it  
should.

Momentum  
fades after  
intention.

Clarity  
weakens  
between  
decisions.

# Application: Leadership & Business

Progress is happening.  
But proportion is weakening.

Movement increases while clarity weakens.

Responsibility expands faster than reflection.

Direction stretches under sustained pressure.

Capability is not the issue.  
Judgement must hold while  
pressure increases.

# Integration: The Experience Shift

You still have capability.  
But context has changed.

This is not decline. Judgement remains.  
But context no longer stabilises it.



The structure  
around you  
has changed.



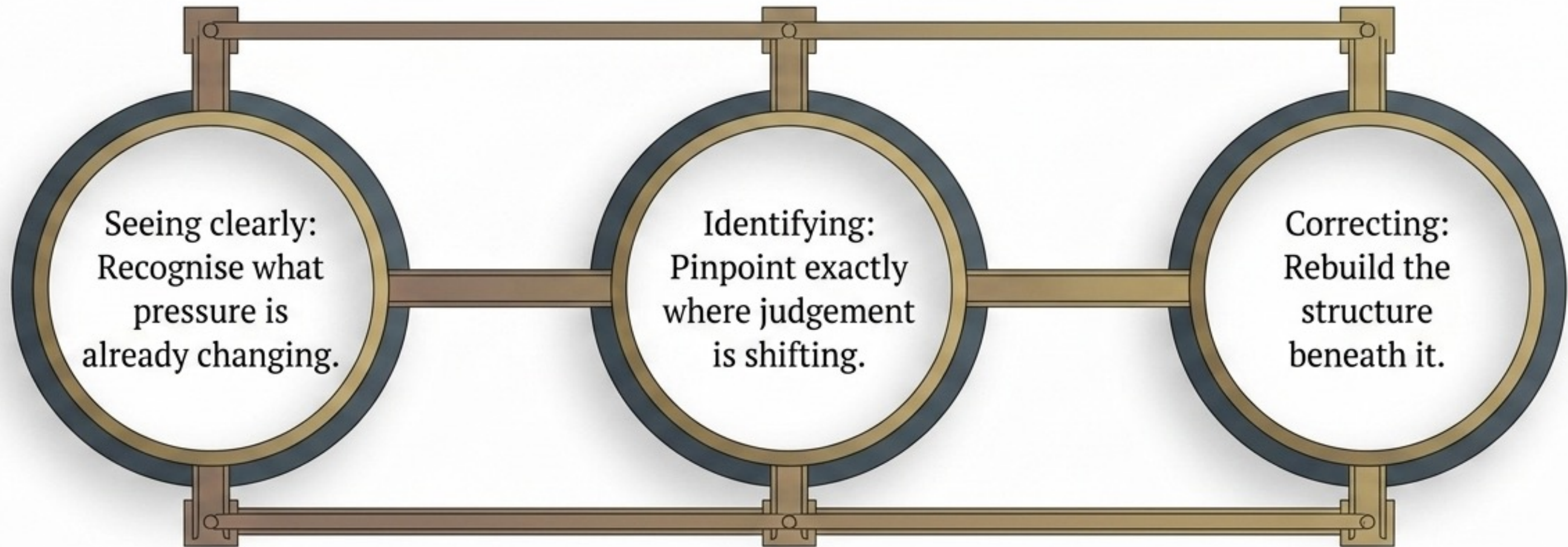
Time opens but  
direction does not  
automatically return.



Experience remains,  
but proportion feels  
less stable.

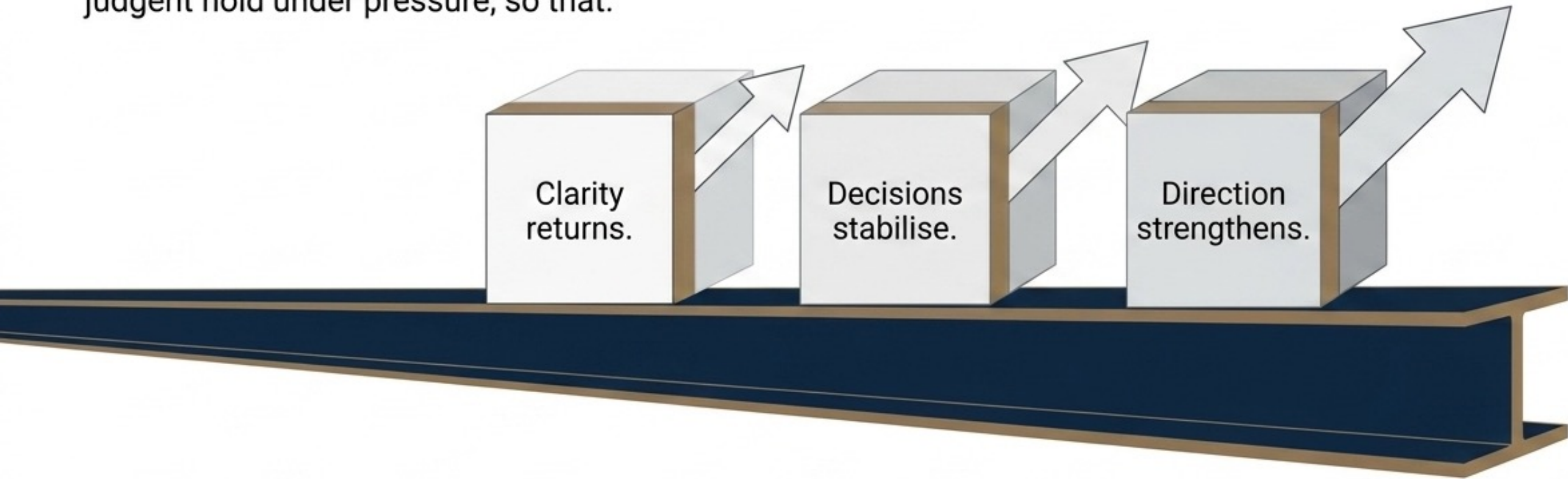
# What Actually Needs to Change

This is not solved by trying harder. It is corrected through restored proportion.



# The Outcomes of Supported Judgement

This system is designed to help judgment hold under pressure, so that:



Change becomes possible. Growth becomes sustainable.

Leadership becomes steady.



# Start Where This Feels Closest

If you can recognise where this shift is showing up—start there.

**You don't just perform better. You build something that holds.**