

# A Leadership That Holds™

The structural mechanics of  
judgment under pressure.



The Holding Discipline | ADISU LLP

**Leadership under pressure  
does not break. It compresses.**

Leadership under pressure does not reduce your capability.  
It changes the conditions under which you think.

What changes first is not skill. It is the operational space in which judgment occurs.

# Nothing looks wrong.



Growth continues.



Decisions move.



Results appear.



There is no visible failure.

## But structurally, something is shifting.



Bandwidth narrows.



Signals compete.



Clarity feels heavier.

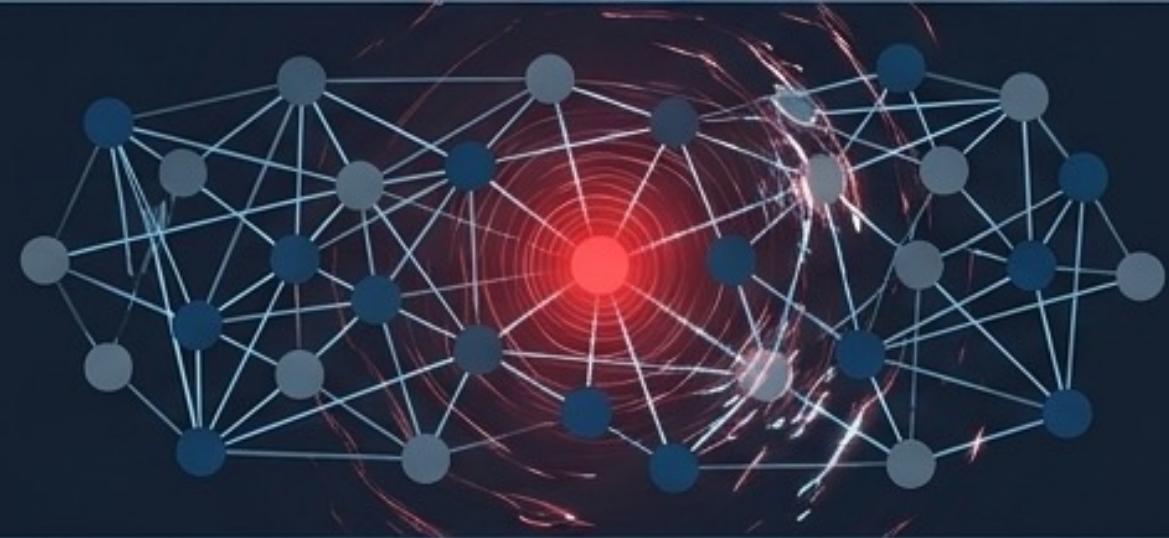
**Leadership does not collapse suddenly. It tightens. Quietly. Gradually. Structurally.**

# The Weight of Responsibility Has Changed



## Earlier

Decisions affected a few.  
Mistakes remained contained.  
Delays were recoverable.

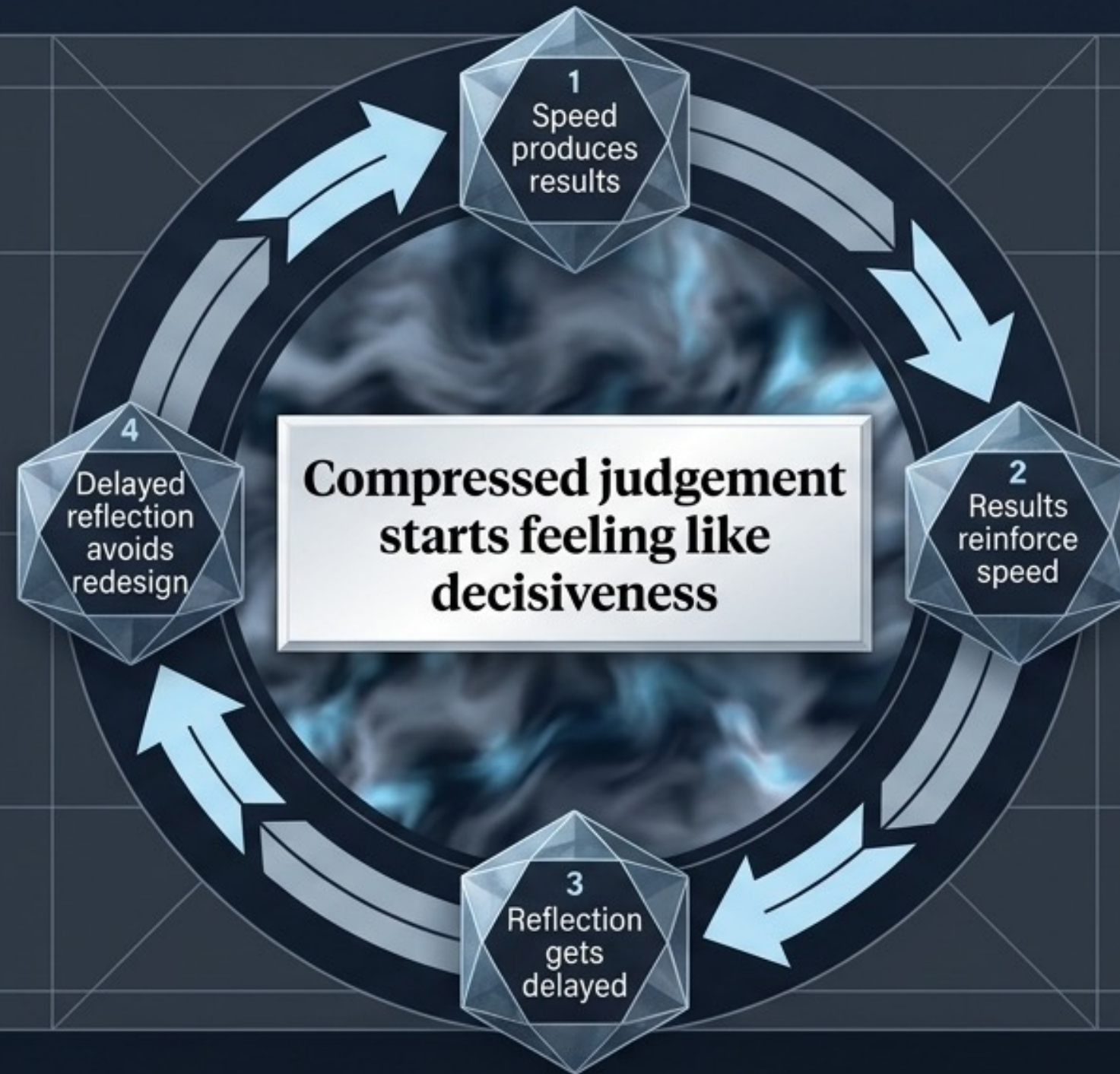


## Now

Decisions affect many.  
Mistakes are highly visible.  
Delays carry compounding cost.

What changes first is time. Time shortens. Expectations expand. Consequences amplify.

# The Compression Loop Trap



You move faster. You feel in control. But your range of thinking is narrowing. This is the trap most leaders stay inside.

# The Drift: How Pressure Distorts Leadership



Experience  
becomes evidence



Evidence becomes  
confidence

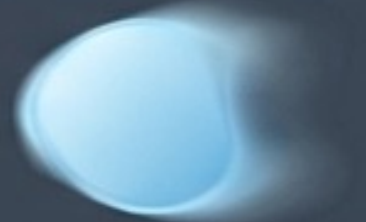


Confidence delays  
recalibration.

## The Structural Distortions



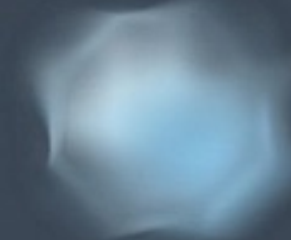
Speed replaces proportion.



Control replaces adaptability.



Confidence replaces recalibration.



Visibility replaces truth.

**These are not personality flaws. They are structural responses to pressure.**

# The Paradigm Shift: Reacting vs. Holding

## Reacting (The Default)

- Urgency-driven ('How do we ensure this gets done?')
- Chasing momentum
- Centralised control

## Holding (The Discipline)

- Importance-governed ('Is this the right decision?')
- Structurally stable
- Adaptable without losing clarity

Holding is not slowing down, avoiding pressure, or controlling everything. It is maintaining proportion under increasing weight. You don't need more control. You need better proportion.

# The Six Levels of Leadership Stabilisation™

Phase 1: The Foundational Awareness Arc (Levels 1-3)

Phase 2: The Advoration Arc (Levels 4-6)



## Level 1: Recognition

I recognize something  
has shifted



## Level 2: Structured Awareness

I understand how my  
patterns become distorted



## Level 3: Deep Application

I can apply this  
knowledge under  
pressure



## Level 4: Integration & Contribution

I lead from a place  
of clarity



## Level 5: Ongoing Recalibration

I continue stabilizing  
over time

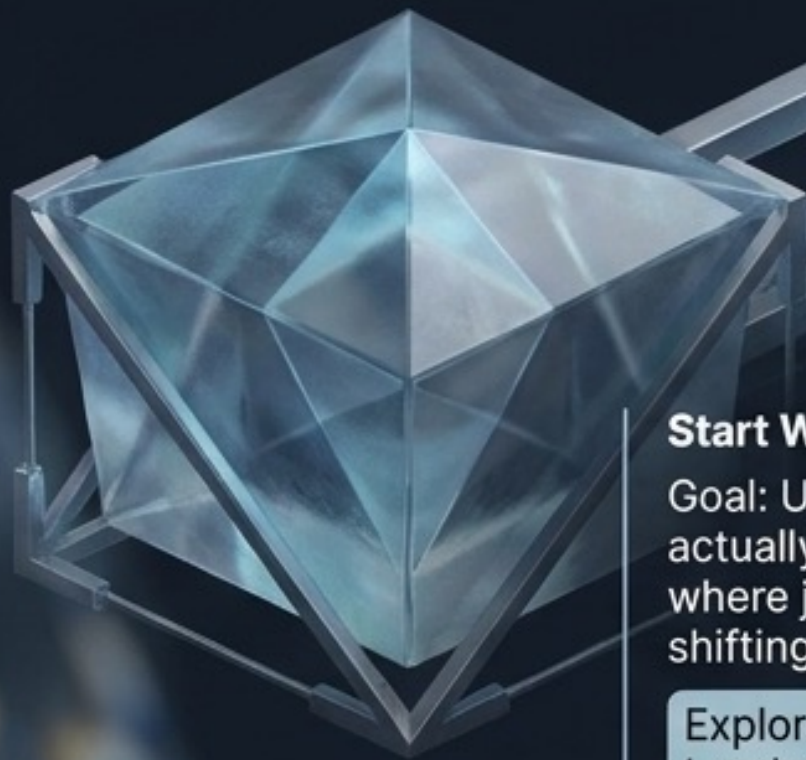


## Level 6: Precision Correction

I correct distortion  
before it compounds

Lasting leadership stability does not occur through motivation alone. It requires an operational pathway.

# Phase 1: Diagnostics & Operational Correction



## Start With the Book

Goal: Understand what is actually happening. See where judgment is shifting.

Explore the Book – A Leadership That Holds.



## The Foundation (₹3,999)

Goal: Identify what is actually wrong. Find where structure is misaligned and pressure is distorting decisions.

Start Seeing What's Changing.



## Deep Application (₹14,999)

Goal: Understanding is not enough. Separate clarity from accumulated decisions and rebuild direction.

Fix What's Not Working.

# Phase 2: When Leadership Becomes Contribution

**Clarity that only helps you is incomplete. What you stabilize within yourself must begin stabilizing others.**

## **The Contribution Holding System™** (₹44,999)

- Recognize recurring instability patterns.
- Stabilize decision environments under pressure.
- Create operational clarity others can function inside.



## **The Holding Circle™** (₹9,999/mo | ₹99,999/yr)

- Clarity is not a one-time insight. It needs something that holds it.
- Work with real situations to maintain operational consistency and prevent drift.

# The Precision Intervention™

Some situations carry consequences that cannot be ignored.  
Waiting creates further instability.

## The Protocol

- Focused on a single, real situation.
- Not ongoing. Not general.
- Designed for immediate operational clarity.

### Parameters

Reserved for moments where delay increases pressure, instability, or operational risk.

We identify distortion, correct what matters, and reduce instability before it compounds.

Only a limited number undertaken each week.

# Where Should You Start?



## Innovation / Change

**Your State:** You are trying to fix things, but clarity on what is not working is missing.

**The Focus:** Diagnostic Awareness.

**The Path:** The Book & The Foundation System.



## Business / Growth

**Your State:** Things are working, but you are not fully sure what is holding them.

**The Focus:** Structural Application.

**The Path:** Deep Application & The Contribution System.



## Experience / Escalation

**Your State:** Your experience is intact, but needs structure to guide decisions under immense strain.

**The Focus:** Immediate Stabilisation.

**The Path:** The Holding Circle or Precision Intervention.



# You don't need to try harder.

You need to see differently.  
And build a leadership that holds.

---

If you've reached this point... pause.  
Clarity does not come from effort alone.  
It comes from seeing across dimensions.